

# IT Services Monitoring



## REAL-TIME, FULL-STACK VISIBILITY FOR MODERN IT SYSTEMS

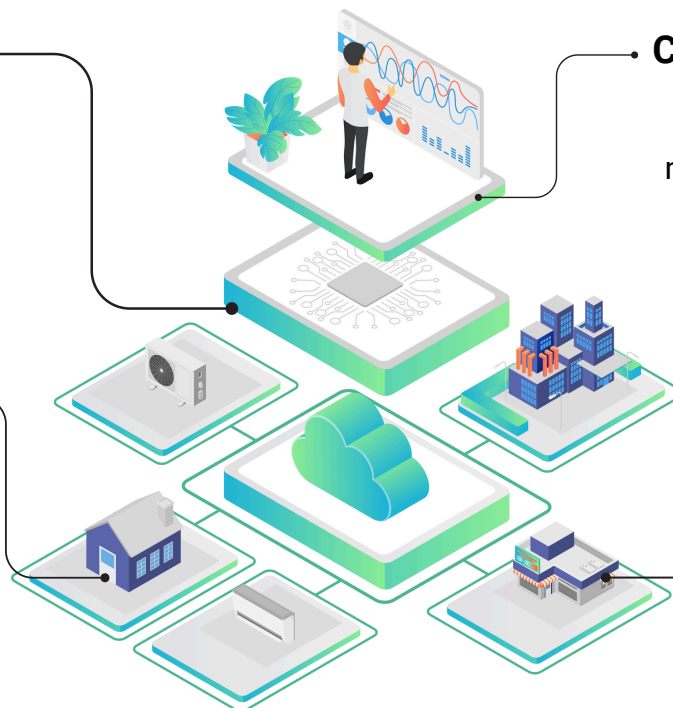
### Why is IT Monitoring a Headache?

#### Lack of Visibility

The difficulty of getting a clear, unified view of systems across various platforms poses a challenge to root cause detection

#### Delayed Issue Detection

Traditional monitoring tools often report issues after they've caused significant damage.



#### Complex Integrations

Monitoring tools are difficult to integrate with multi-cloud environments and various apps.

#### Costly

**Downtime**  
Extended downtime and service interruptions lead to increased costs and decreased productivity.

### Imagine a Solution That Can...

- Provide **instant visibility** into application, server, database and cloud environments.
- Offer **full stack observability** in one platform.
- Create **personalized dashboards and reports** for easy monitoring of critical metrics.
- Detect anomalies and send proactive **AI-driven alerts** to address potential issues.

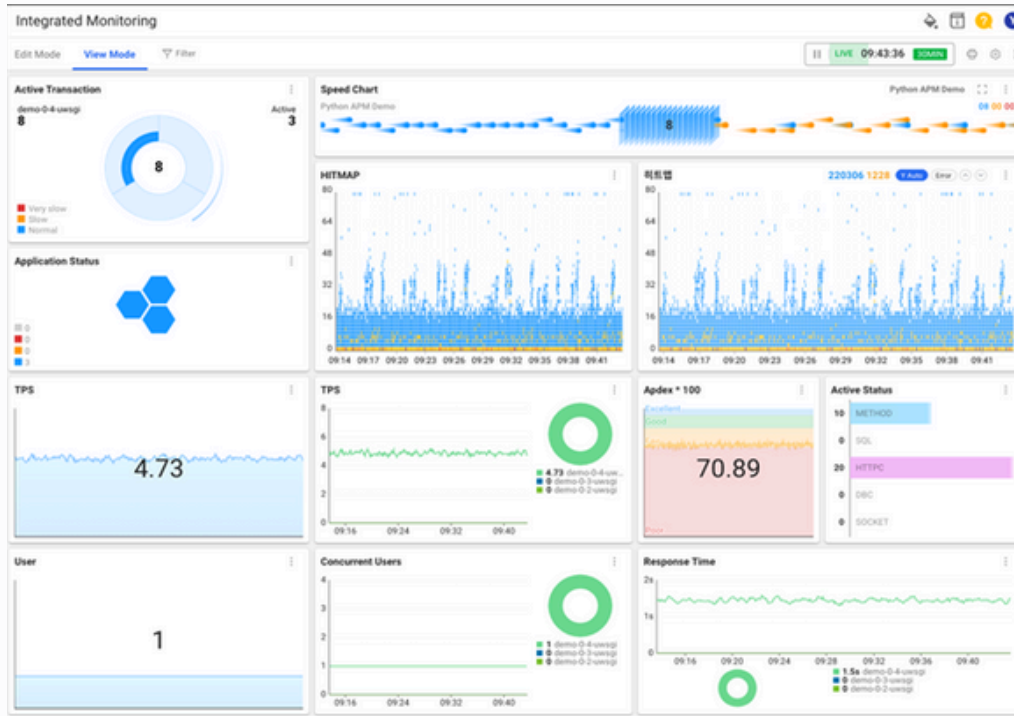


### Our Key Advantage:

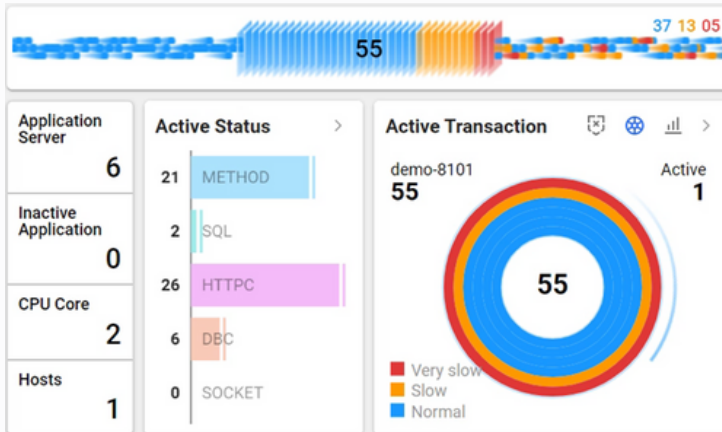
- Powerful and flexible IT monitoring platform with real-time observability across your infrastructure
- Lightweight data collection with minimal system impact
- Provides active stack monitoring
- Offers customizable dashboards
- Cost-effective pricing

# Snapshots from WhatTap

## Example of User-Defined Dashboards



## Real-Time Monitoring of Running Transactions



## Example of Application Daily Reports

### Application Daily Report

Lookup criteria 2024-10-10(Thu) 00:00:00 ~ 2024-10-10(Thu) 23:59:59

#### Intro

Visitor(DAU)	Request	Error Ratio(%)	Event Count	Application Count	Total Core	APDEX*100
14	2,531	0.04%	5	1	2	97.136

#### PeakTime Summary(16:20)

TPS	Concurrent User	Request	Avg Response(ms)	Error Ratio(%)	Application Server	CPU Core
0.15	3	45	2,135	0.0	1	2

#### Average/Maximum Value by Metrics

	Concurrent User	Visitor Per Hour	TPS	Avg Response (ms)	Server CPU Use d Percent	Server Memory Used Percent	Error Count
Average	0.96	1.71	0.03	469.6839195	23.04	74.21	0.0
Max (Time of occurrence)	4 (11:50)	6 (11:00)	0.15 (16:20)	301,747.0 (17:50)	83.86 (17:30)	87.93 (17:40)	1 (16:15)

## Proactive Monitoring, Zero Downtime

- Keeping Your IT Running Smoothly -

